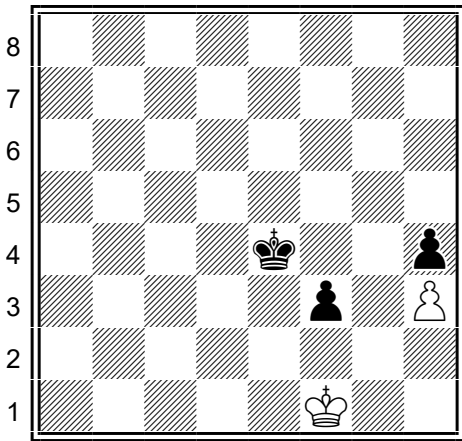
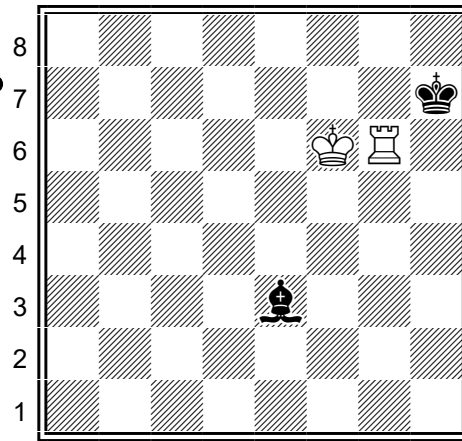


Diag.1



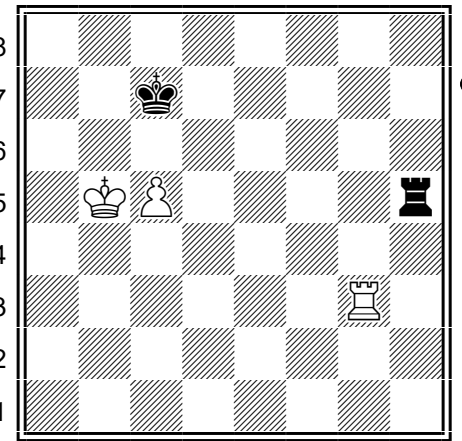
a b c d e f g h
Jak cerny vyhraje?

Diag.2



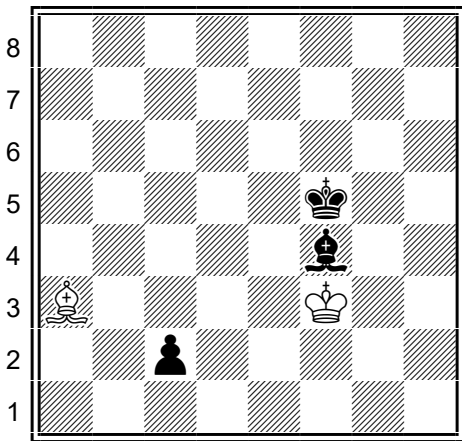
a b c d e f g h
Bilemu se povedlo zatlacit cerneho krále do spatneho rohu. Jak nyni vyhraje?

Diag.3



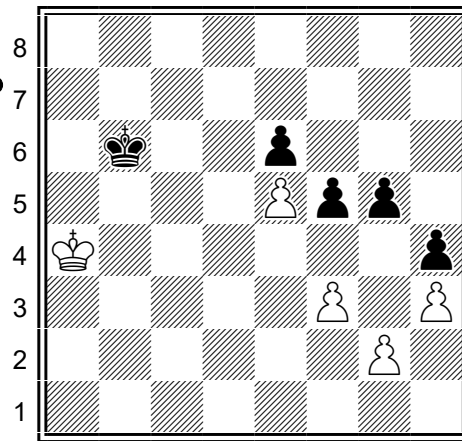
a b c d e f g h
Pozice na diagramu je stale jeste remizova. Cerny vsak nyni zatahl vezi na f5 - co nasledovalo pak?

Diag.4



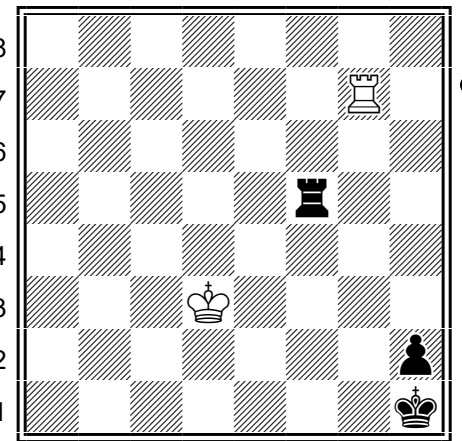
a b c d e f g h
Jak vypada vitezny plan cerneho?

Diag.5



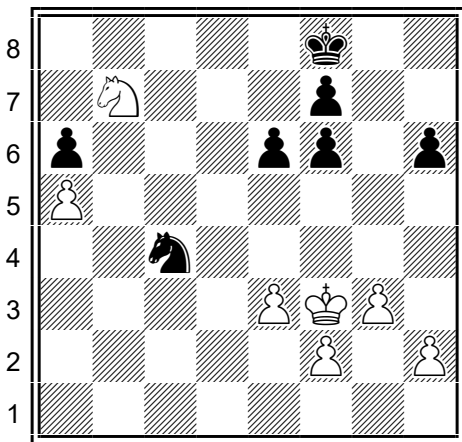
a b c d e f g h
Vypada to, ze bily podlehne - cerny ma k dispozici dulezite tempo tahem pescem ... f4. Muze se bily jeste zachranit?

Diag.6



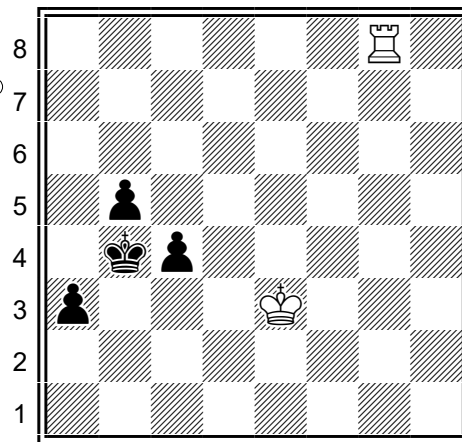
a b c d e f g h
Jaky je vitezny postup cerneho? Odhalite nejen prvni tahy, ale take zejmena taktiku v 6. a 7.tahu?

Diag.7



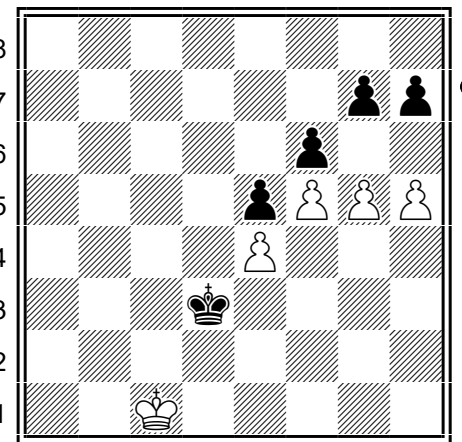
a b c d e f g h
Jake ma bily sance? Jaky ma zvolit plan?

Diag.8



a b c d e f g h
Cerny muze vyhrat - jaka je nejjednodussi cesta k cilu?

Diag.9



a b c d e f g h
Jak vyhodnotite sance cerneho v teto pescovce? Co ma hrat?