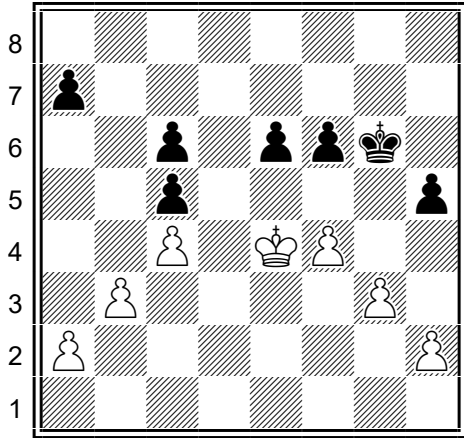
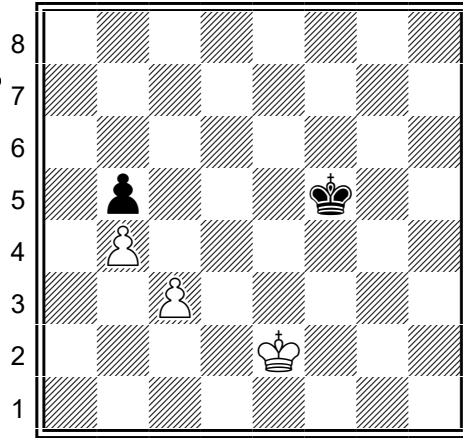


Diag.1



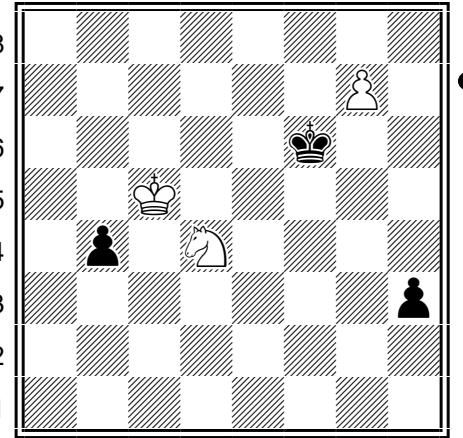
Bily potrebuje vstupni bod pro prunik do cerne pozice. Jak to provede?

Diag.2



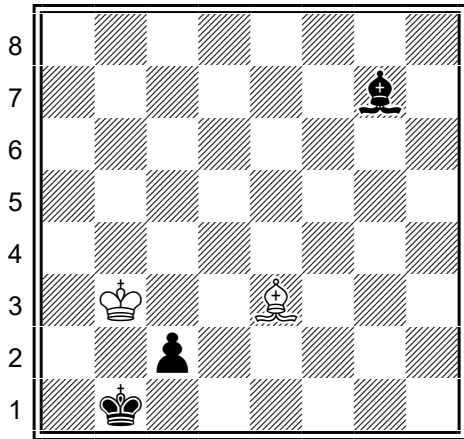
Cerny bojuje o zachranu. Jaky tah ma zvolit?

Diag.3



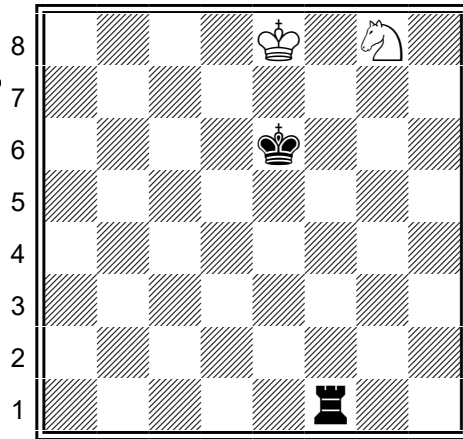
Cerny ma jasnou remizu, pokud sebere pesce na g7. Muze dosahnout lepsiho vysledku?

Diag.4



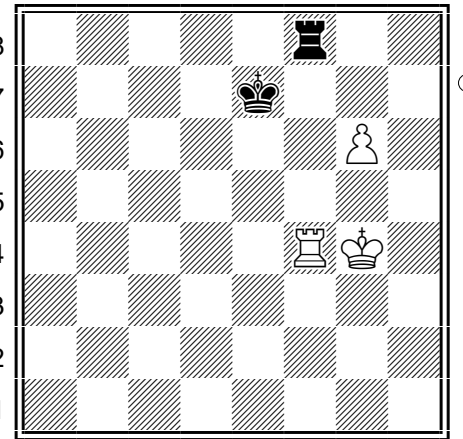
Jak cerny vyhraje tuto standardni pozici stejnobarevných strelcu?

Diag.5



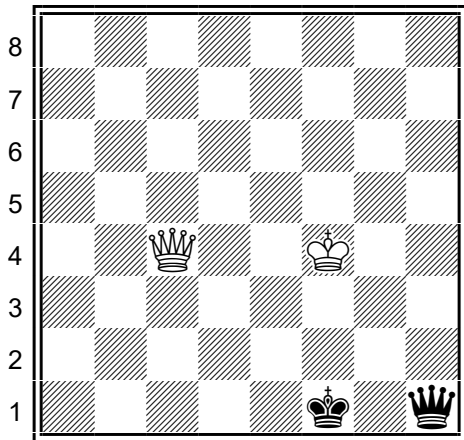
Remiza nebo prohra? Co ma bily hrat?

Diag.6



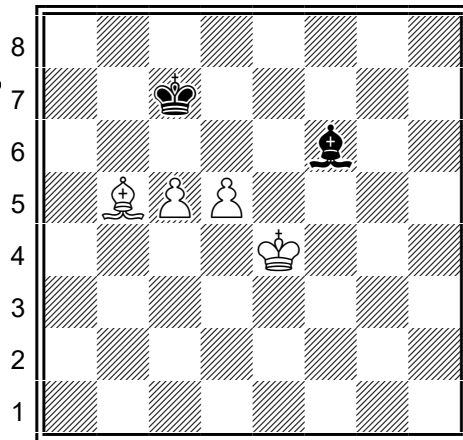
Cerny prave zahajil boj o f-sloupec tahem Vf8. Muze bily vynutit vyhru?

Diag.7



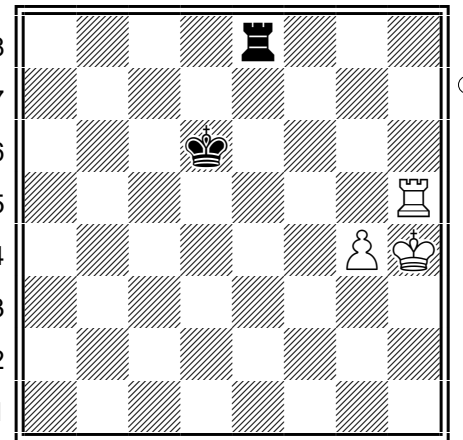
Cerny ma na vyber tahy Kg1, Kf2 a Kg2. Pouze jeden z nich vede k remize. Proc ty ostatni dva prohravaji?

Diag.8



Jak se ma cerny branit?

Diag.9



Bily ma jednu cestu k vyhre - naleznete ji?